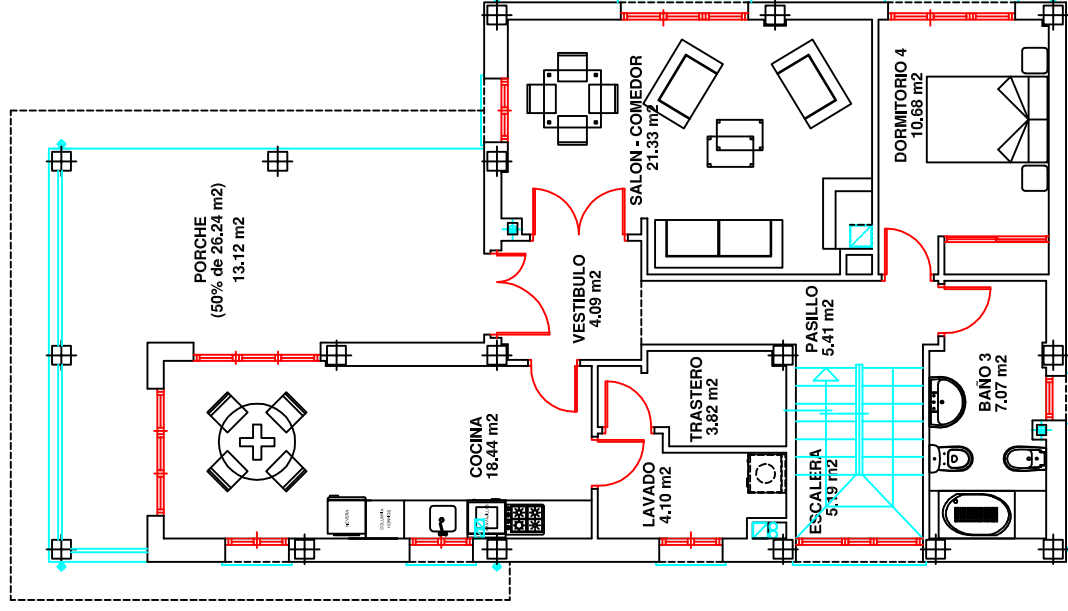
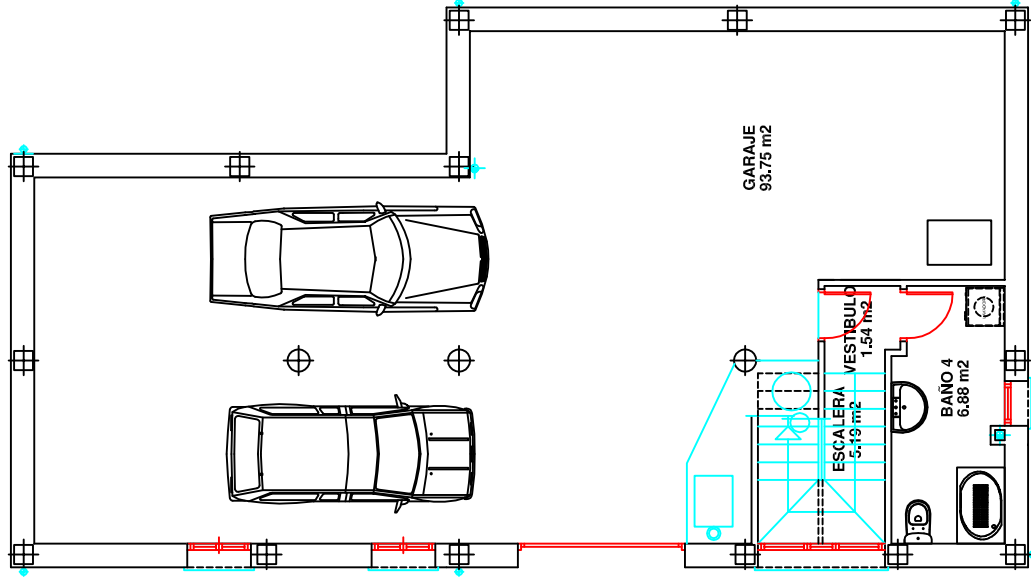


PLANTA PISO



PLANTA BAJA



PLANTA SEMISOTANO



REF. 302

PLANTA	SUPERFICIE EN VIVIENDA	
	UTILES	CONSTRUIDOS
SEMISOTANO	107.36 m ²	125.05 m ²
BAJA	106.37 m ²	125.80 m ²
PISO	60.75 m ²	76.56 m ²
TOTAL VIVIENDA	274.48 m²	327.41 m²

RESUMEN DE SUPERFICIES